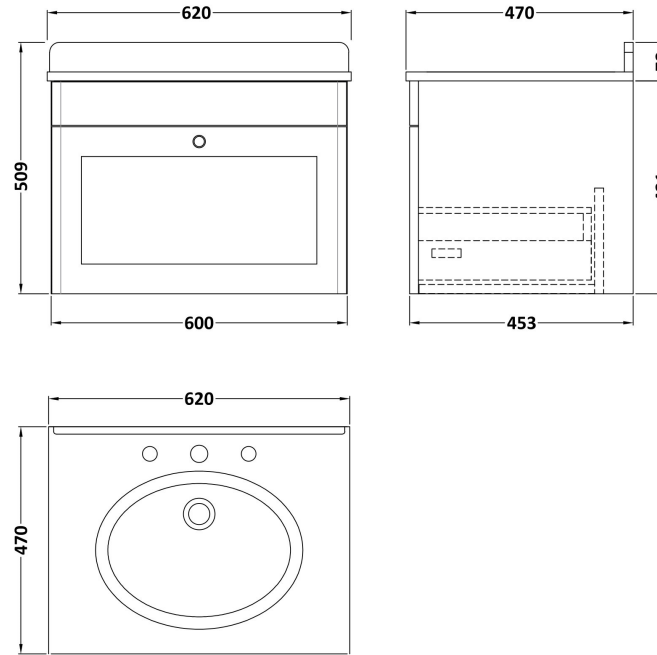


Sales Code: CLC1494GR3

Description: 600 W/H 1-Drawer Unit & Marble Top 3Th

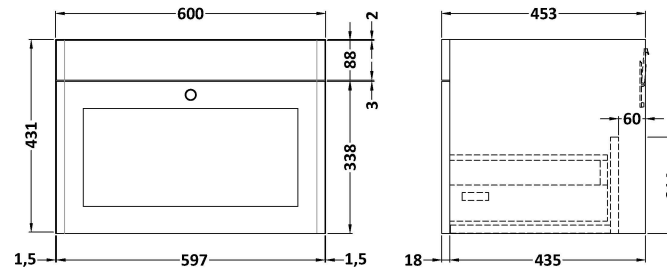


Packaging Details

Barcode: 5056678417621

Sales Code: CLA1494

Description: 600 W/H 1-Drawer Unit (431X600x453)



Product Dimensions

Height (mm):	431
Width (mm):	600
Depth (mm):	453
Nett Weight (kg):	19

Packaging Dimensions

Height (mm):	465
Width (mm):	625
Depth (mm):	480
Gross Weight (kg):	19.5

Packaging Data

Box Colour:	Brown Cardboard Box
Box Qty:	1
Label Size:	100 x 50
Label Colour:	White Label
Label Qty:	2

Outer Box Dimensions (If Applicable)

Height (mm):	
Width (mm):	
Depth (mm):	
Gross Weight (kg):	
Barcode:	5056462643298

Product Details

Country of Origin:	China
Fitting Instruction:	No
CE & UKCA:	N/A
FSC Certified Materials:	Yes
Colour:	Satin Soft Black
Construction Method:	Cam & Wood Dowel
Construction Type:	Rigid
Cabinet Finish:	MFC Painted Matt
Fascia Finish:	Mdf Painted Matt
Cabinet Thickness (mm):	18
Fascia Thickness (mm):	18
Drawer Included:	Yes
Drawer Type:	80mm High Metal S/C Inc Galler
No of Shelves:	Not Applicable
Hinge Type:	Not Applicable
Hinge Included:	Not Applicable
Adjustable Legs:	No, Not Required
Fixings Included:	Yes
Handle Style:	Traditional
Waste Shroud:	Yes
Handle Included:	Yes, Supplied
Handle Type:	Knob

