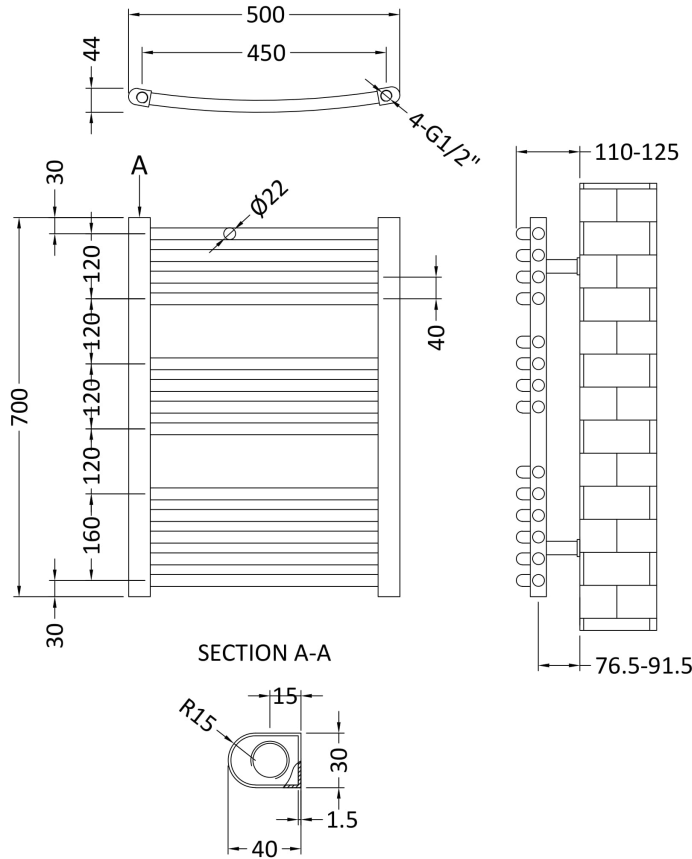


Sales Code: HK385

Description: Curved Ladder Rail 500mmx700mm



Product Dimensions

Height (mm):	700
Width (mm):	500
Depth (mm):	44
Length (mm):	
Nett Weight (kg):	5.7

Packaging Dimensions

Height (mm):	65
Width (mm):	525
Length (mm):	730
Gross Weight (kg):	6.8

Packaging Data

Box Colour:	White Cardboard Shrinkwrapped
Box Qty:	1
Label Size:	100 x 50
Label Colour:	White Label
Label Qty:	2

Outer Box Dimensions (If Applicable)

Height (mm):	
Width (mm):	
Length (mm):	
Gross Weight (kg):	
Barcode:	5055369003792

Product Details

Country of Origin:	Turkey		
Fitting Instruction:	No		
Certification:	CE & UKCA: Yes	RoHS: N/A	WEEE: N/A
Colour/Finish:	Chrome		
RAL No:	N/A		
Product Material:	Steel		
Heat Element Wattage:	150 W		
Heating Element Wattage Compatible:	N/A		
BTU Outputs:	30°C / 438	50°C / 710	60°C / 899
Thermal Outputs: (Watts)	30°C / 107	50°C / 208	60°C / 258
Pipe Centres - If Vertical:	464mm		
Pipe Centres - If Horizontal:	N/A		
Max Projection:	90mm		
Tube Diameter:	27mm		
Packaging Volume (L):	N/A		
Wall to Centre of Tappings:	N/A		
Floor to Centre of Tappings:	65		
Dual Fuel:	N/A		
IP Rating:			