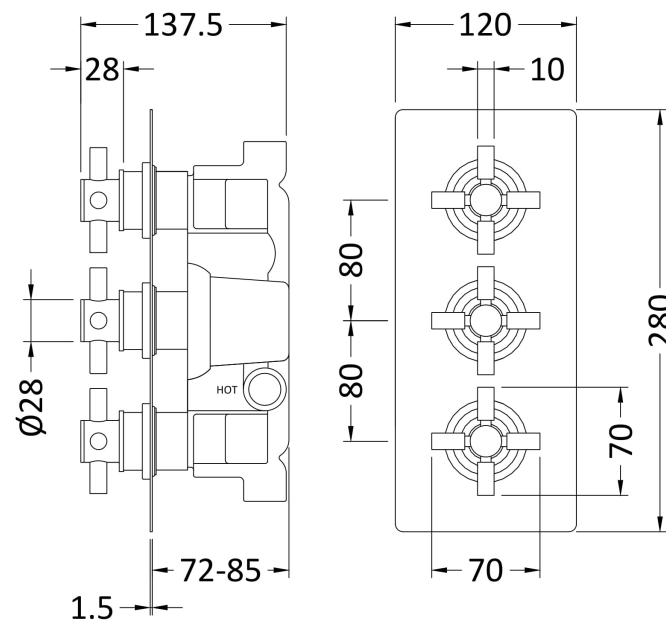
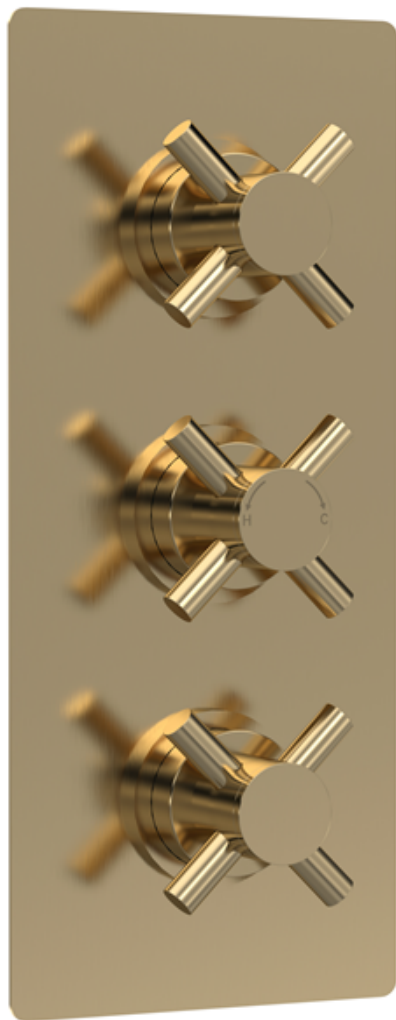


Sales Code: KRI8211

Description: Kristal Trip Conc Thermo Valve Rec Plate



**Product Dimensions**

Length (mm):	
Width (mm):	120
Height (mm):	280
Depth (mm):	136
Nett Weight (kg):	5.88

**Packaging Dimensions**

Length (mm):	320
Width (mm):	250
Height (mm):	110
Gross Weight (kg):	5.88

**Packaging Data**

Box Colour:	White Cardboard Box
Box Qty:	1
Label Size:	100 x 50
Label Colour:	White Label
Label Qty:	2

**Outer Box Dimensions (If Applicable)**

Length (mm):	
Width (mm):	530
Height (mm):	370
Depth (mm):	350
Gross Weight (kg):	24
Barcode:	5056462673950

**Product Details**

Country of Origin:	United Kingdom
Fitting Instruction:	No
Product Material:	Brass/ABS
Mount Type:	Wall, Recessed
Outlet Elbow Supplied:	No
Easy Clean:	Not Applicable
Head Included:	No
Handset Included:	No
Body Jets Included:	Not Applicable
No of Body Jets:	Not Applicable
Operating Pressure (bar):	0.1
Valve/Cartridge Type:	1/4 Turn Ceramic Disc
Flow Rates (L/min):	0.1 bar: 14    0.5 bar: 20    1 bar: 29    2 bar: 29    3 bar: 44
TMV2 Approved:	No    Approval No: N/A
TMV3 Approved:	No    Approval No: N/A
WRAS Approved:	Yes    Approval No: 250602040
Head Function:	Not Applicable
Handset Function:	Not Applicable
Body Jet Info:	Not Applicable
Pipe Size:	
Pipe Centres:	N/A
Colour/Finish:	Brushed Brass
Hose Included:	Not Applicable
No. of Outlets:	2